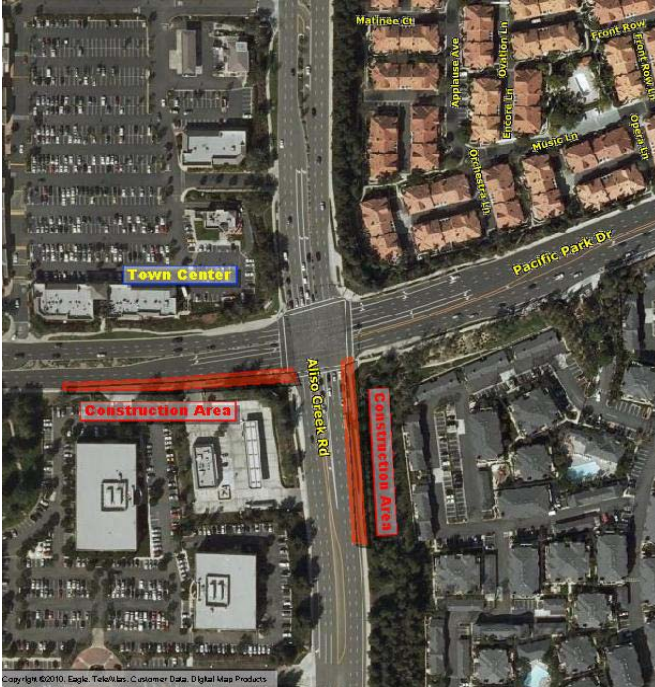




## Pacific Park Drive and Aliso Creek Road Intersection Project



The Pacific Park and Aliso Creek Road Intersection Widening project is part of the City's continuing efforts to maintain its roadway system at a high level of service and improve traffic flow through this intersection.

This traffic-easing project includes adding right-turn lanes from eastbound Pacific Park onto Aliso Creek Road and northbound Aliso Creek Road onto Pacific Park Drive. Construction is expected to begin July 5, 2010 and be completed in September, 2010.

The work will consist of removing existing pavement, installing new asphalt pavement, replacing sidewalk, roadway striping and traffic signal improvements. This essential project is being funded with Measure M funding.

During construction, motorists may experience short delays, as eastbound Pacific Park Drive and northbound Aliso Creek Road will be reduced to two lanes in these directions. Traffic control signs will detour motorists through and around the construction zone. Pedestrian traffic will also be re-routed at this intersection. Construction is expected to take place from 7:00 a.m. to 4:00 p.m. each day, but sidewalk and lane closures will be permanent during the course of the project.

Entrances to the businesses adjacent to the project will remain open from Pacific Park Drive, but alternate exits to Aliso Creek Road will be used.

The City thanks you in advance for your patience and cooperation during this important street-enhancing, traffic-easing project. For more information, contact Public Works at 949-425-2530 or [pworks@cityofaliso Viejo.com](mailto:pworks@cityofaliso Viejo.com).



Northbound on Aliso Creek

